

Veterinary Ultrasound Imaging Systems

Digital Color Doppler · Portable Color Doppler · Digital Portable

SIUI

SHANTOU INSTITUTE OF ULTRASONIC INSTRUMENTS CO., LTD.

Add: #77, Jinsha Road, Shantou 515041, Guangdong, China

Tel: 86-754-88250150 Fax: 86-754-88251499

E-mail: siui@siui.com Website: <http://www.siui.com>



Specifications and appearance are subject to change without prior notice.
DCY2.782.EN.Catalog-V.CY/2A01

SIUI

Insight into life , passage to health



About SIUI

Dedication to medical ultrasound

As one professional institute of ultrasound systems and transducers, SIUI has been dedicated to R&D and manufacture of ultrasound systems since 1978. Today, in virtue of powerful capacity of development and continuous dedication to persistent innovation in ultrasonography, SIUI is at the forefront of global medical imaging field, and will further provide medical facilities with better products and service.

Leader of China's ultrasound industry

SIUI attracts a group of talents with strong R&D background, and equips with advanced facility. Every year, SIUI spends 10% of the sales revenue in technical research and development. Besides, SIUI also carries out technical cooperation with world famous scientific institutions, thus not only keeping SIUI in a leading place in China's ultrasound field, but also in a competitive position in the global ultrasound industry.

Complete product line

SIUI has a complete product line, including portable to trolley based, B/W to color Doppler ultrasound systems. SIUI is able to meet the needs of medical institutions at all levels with various kinds of suitable products.

Global market perspective

SIUI conceives global market perspective. At the moment, SIUI's products are providing healthcare service for people in more than 100 countries and areas. In constant pursuit of technical innovation, SIUI shall maintain a fast growing status to achieve a higher target.



APOGEE 3800 Vet

New Generation High-End Color Doppler

With over thirty years' experience in development and manufacture of ultrasonic imaging systems, SIUI is fully aware of the importance for ultrasound practitioner: imaging quality as clear as visualization, operation flow as smooth as possible. By adopting edge-cutting ultrasound imaging technologies, such as compound imaging, color speckle reduction, tissue harmonic imaging, adaptive speckle reduction, as well as comfortable and convenient operation flow, the Apogee 3800 Vet provides all-in-one and functional clinical solutions for the practitioners.



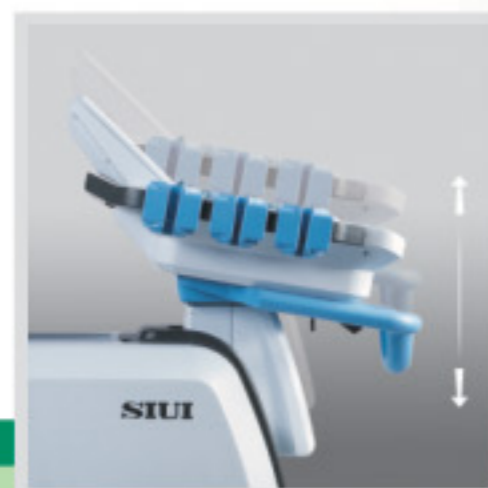
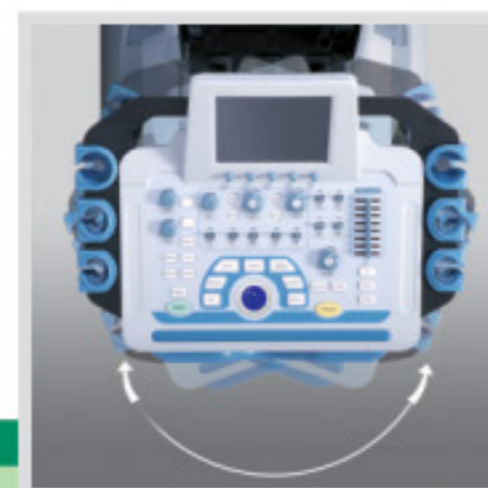
Touch Screen Control



Ergonomic-Designed Console

Cutting Edge Ultrasound Imaging Technology

- **Compound Imaging**
Significantly improves resolution, resulting in clearer display of tissue boundary composed of different densities.
- **Color Speckle Reduction**
Enabling smooth and continuous color flow map, useful for scanning small vascula.
- **Tissue Harmonic Imaging**
Enhancing image resolution and reducing signal interference from surrounding tissues, thus image quality is greatly improved.
- **Directional Power Doppler**
Combined with advantages of Color Doppler and Power Doppler, it can not only detect very low speed flow, but distinguish flow direction and velocity.



Digital Color Doppler

APOGEE 3500 Touch Vet

Digital Color Doppler Ultrasound Imaging System

Dedicated to ultrasound system industry, SIUI introduces the Apogee 3500 Touch Vet Digital Color Doppler Ultrasound Imaging System. By adopting multiple leading imaging technologies, the Apogee 3500 Touch Vet is featured with high-resolution image quality and rich functions, suitable for ultrasound examination all over human body. During the examination, sonographers may enjoy the diagnostic pleasure and patients may experience the safety and comfort brought by advanced technologies.

- **Trapezoidal Imaging**

The extended field of view displays more image information without sacrificing image quality, a convenient approach especially for scanning big-size organs.

- **Linear Steering Imaging**

By steering the imaging area of linear array, sonographers can easily scan the neighboring organs without moving the probe, thus scanning becomes more efficient and easy.

- **Color Speckle Reduction**

By employing 2D filtering, it can effectively remove color flow noise, enabling flow map even and continuous, useful for scanning small vascula.

APOGEE 3500 Basic Vet

Digital Color Doppler Ultrasound Imaging System

Dedicated to ultrasound system industry, SIUI introduces the Apogee 3500 Basic Vet Digital Color Doppler Ultrasound Imaging System.

The Apogee 3500 Basic Vet adopts multiple latest imaging technologies. Together with high-resolution image quality, as well as rich and practical functions, it provides the optimal solution for clinical ultrasound examination.

- **Touch Screen Control**

By operating the color touch screen, sonographers may fully understand the current operation flow at a glance and achieve their exams quickly.

- **Abundant Probe Connector**

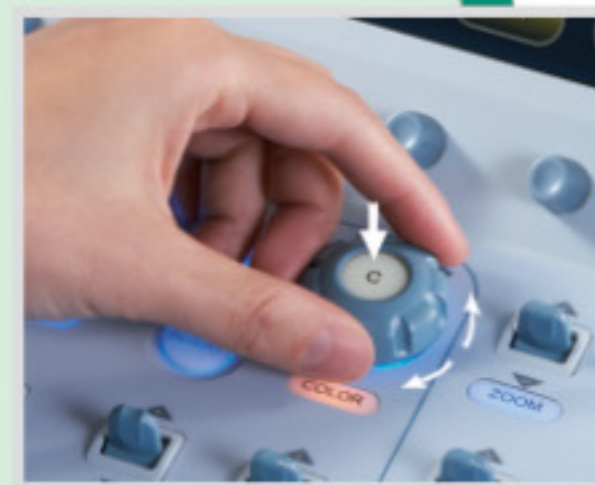
With four probe connectors available (3 active and 1 parking), the system can be configured with four probes at the same time.

- **Ergonomic-Designed Console**

With the ergonomic-designed console, integrated button control, as well as color touch screen, sonographers may easily complete the operation with one hand.



Touch Screen Control



Ergonomic-Designed Console



Portable Color Doppler



APOGEE 1100V

Digital Color Doppler Ultrasound Imaging System

With respect to most portable color ultrasound systems, the designers usually have to compromise image quality in order to achieve device portability. The launch of Apogee 1100V completely breaks this rule. Its original MITech significantly improves image quality of ultrasonic systems, which enables the compact system with advanced features you can only find in high-end trolley color Doppler.



APOGEE 1000V

Digital Color Doppler Ultrasound Imaging System



- **Auto Identification**

Auto identification of scanning penetration mode and resolution mode. When adjusted to predetermined depth, the system will auto go to penetration mode. On the contrary, it will auto go to resolution mode.

- **Real-time Pan Zoom**

Enabling real time observation of zoomed images in order to have a further look at the ROI.

- **Adjustable Image Line Density**

- **Firmware and Software Upgrade**

With one USB disk alone, the user may continuously and conveniently access SIUI's latest research results, such as improving image quality, supporting more probes, adding new features, etc.

Digital Portable

CTS - 7700V

Digital Veterinary Ultrasound Imaging System

The CTS-7700V is a PC-based high-end digital veterinary ultrasound imaging system. The technology platform transplanted from high-end systems ensures that the system delivers clear diagnostic images. Together with powerful functions, abundant software and smooth operation flow, the system will facilitate doctors to perform handy and comfortable exams.



CTS - 5500V

Digital Veterinary Ultrasound Imaging System

The CTS-5500V is a high-end digital veterinary ultrasound imaging system. It can be equipped with a variety of special probes, meeting examination and diagnosis requirements for different animals. The system plays an important role in injury diagnosis of joint and tendon, organ disease diagnosis such as cardiology, pregnancy check, ovarian growth check for increasing conception rate and litter size, as well as biological engineering research such as assisting embryo transplantation.

Digital Portable

CTS - 900V Plus

With New Generation Chip
and Signal Processing Technology

The currently highest integrated and performance TR signal processing chip in the industry is adopted for ensuring system high reliability and stability. Innovative segment logarithm compression ensure the user interested info lossless.

The high velocity and resolution AD conversion guarantees good image resolution, making every minute lesion "nowhere to hide".

The system penetration is greatly improved by the dynamic frequency transmitting technology, especially suitable for difficult imaging patients.



CTS - 900V

Digital Veterinary Ultrasound Imaging System

The CTS-900V is a high-end laptop-design veterinary ultrasound imaging system, which integrates imaging technologies of high-end trolley system. Though compact in dimension, it is featured with clear images and powerful functions, which are usually found in bulky ultrasound systems. It is suitable for ultrasound exams for **cardiology, OB, abdomen, reproductive systems** on animals such as bovine, ovine, canine, feline, equine and porcine. It is especially suitable for ultrasound exams in situations like zoos, farms and field.

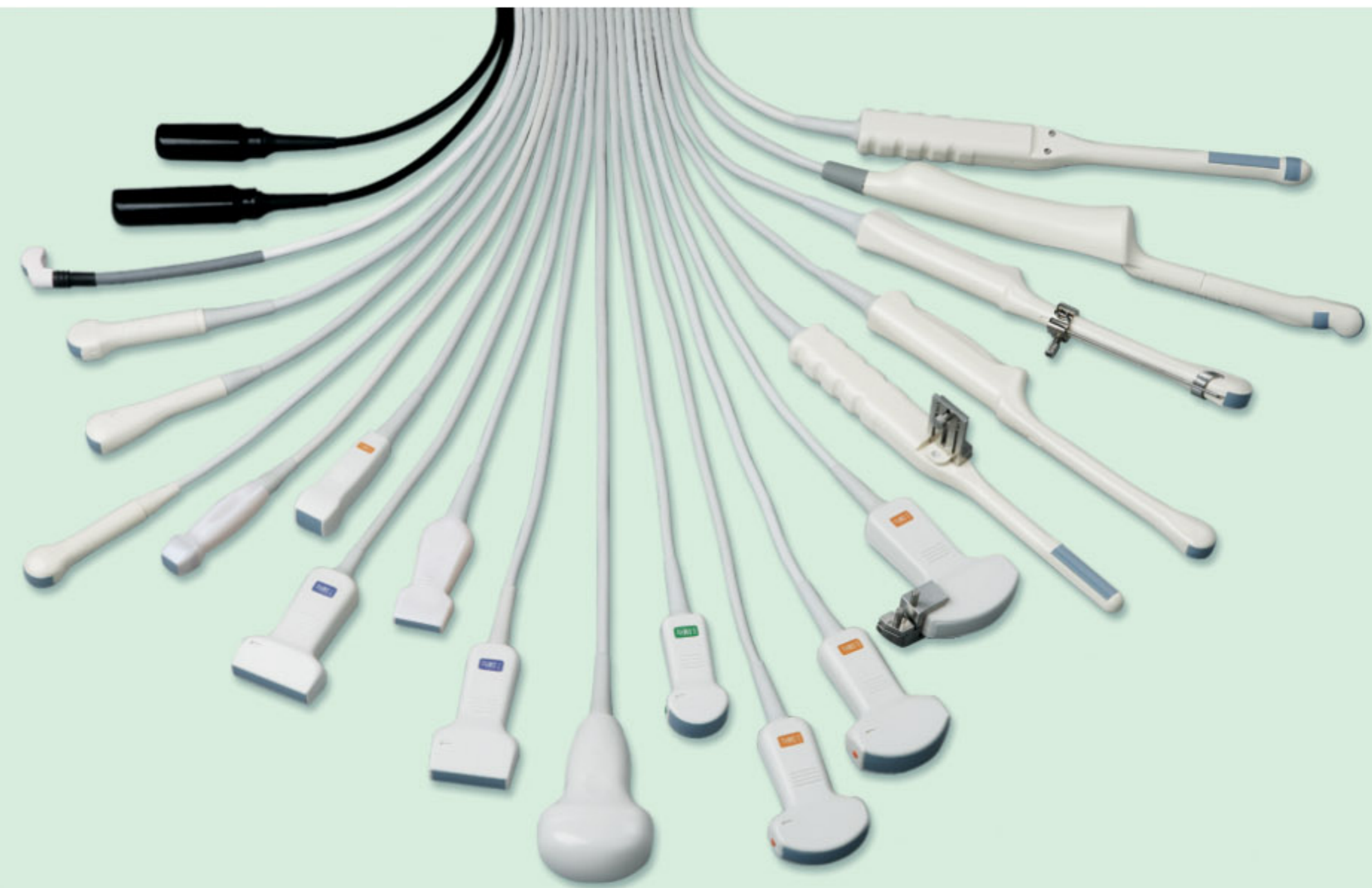
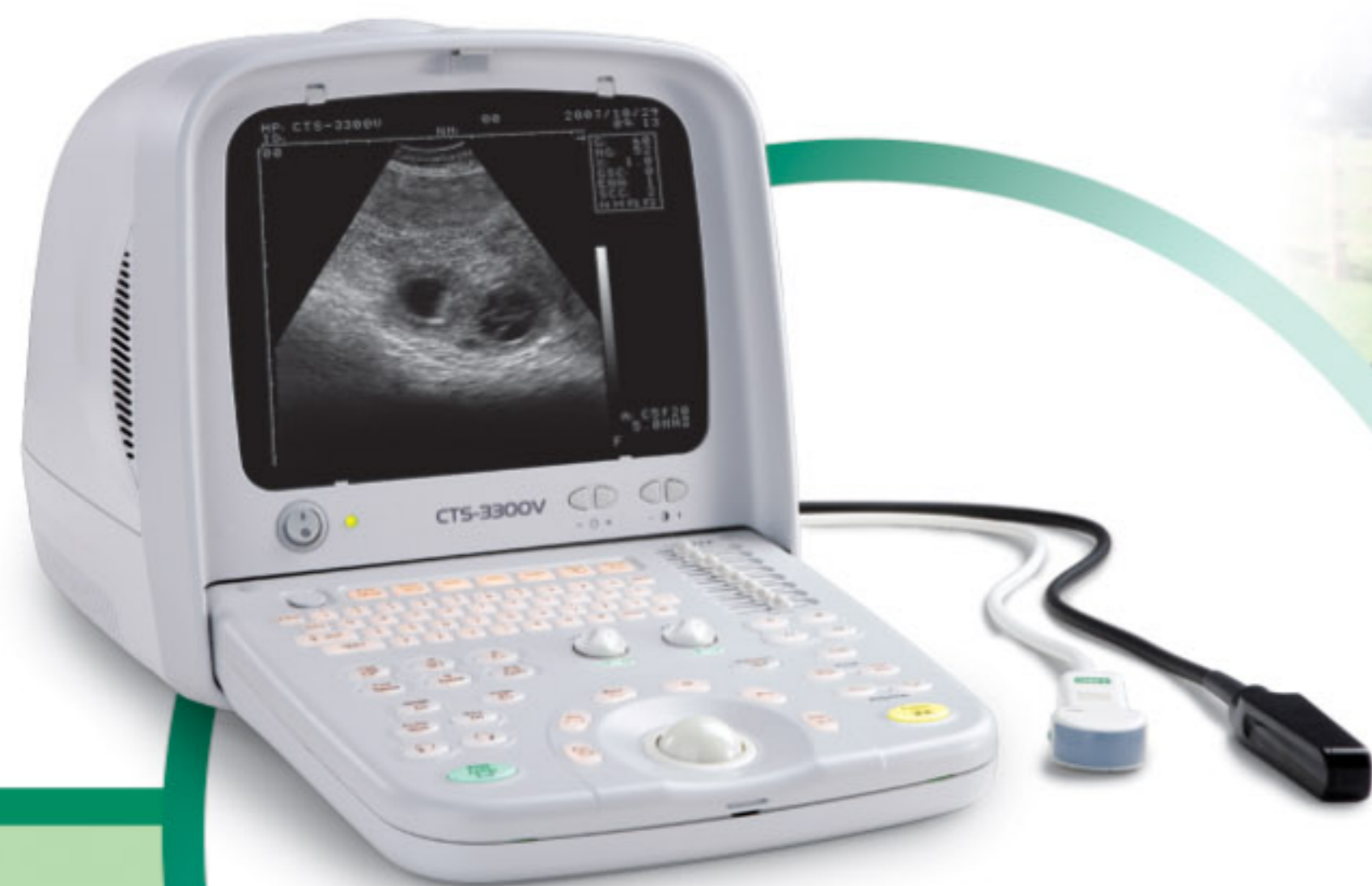


Digital Portable

CTS - 3300V

Digital Veterinary Ultrasound Imaging System

The CTS-3300V is a digital portable veterinary ultrasound system, which is integrated with multiple digital imaging technologies and five-frequency probe technology. As a system for general application, the CTS-3300V has many characteristics, such as cost-effectiveness and clear image quality. It can be used on different animals for ultrasonic exams in zoos, farms, vet clinics and field.



A variety of probes for various applications

The probe line consists of linear probes, convex probes, phased-array probes, micro-convex probes, endocavity probes, which are widely used in abdomen, cardiology, gynecology, vessels, small parts, digestive system and clinical diagnosis to meet requirements of the customers. In addition, we accept repair of probes from various manufacturers, special probe customization and transducer assembly orders, as well as OEM business.